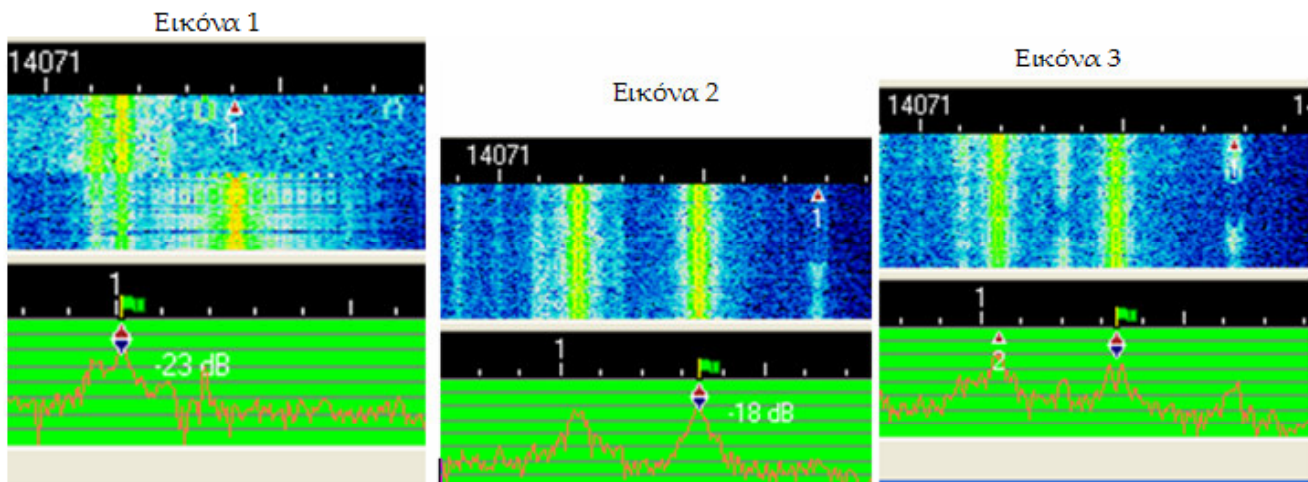


## Using Dual Spectrums in MixW

By Yioryos Spiridakis (SV8GGL)

MixW can now be operated with two Waterfalls or Spectrums. This is for transceivers that have **2 receivers** and **stereo OUT sound**, such as the FT -1000 MP, so we can watch different frequencies or bands. In this case, we use an interface with two separate audio transformers, one each for left and right audio channel leading to the **Line IN** of the sound card in the PC.

Now we can have monophonic RX output, two waterfalls/Spectrums or one waterfall and the other Spectrum in the same radio frequency. For example:



### How this is done:

Open the MixW folder (normally C:\Program Files\MixW) and then find and open **MixW2.ini**. Under the title **[Spectrum]**, we find **TwoSpectrums=0**. Delete the (0) and write a (1), that is to say **TwoSpectrums=1** (see **note 2**). Then under the title **[Device 0 Setup]** find **IQ\_IN2=1**, delete the (1) and write a (0), that is to say **IQ\_IN2=0**. Then click File > Save.

**Note 1:** In my MixW2.ini I did not have **IQ\_IN2=1** but found **IQ\_IN = 1**, therefore I wrote **IQ\_IN2=0**, then Clicked File > Save and closed **all**. When I opened MixW2.ini again I found the **IQ\_IN2=0** and **IQ\_IN=1** also, because MixW automatically creates **IQ\_IN=1**.

**Note 2:** If you have the **dual channel version** of MixW you do not need to change **TwoSpectrums=0** to **TwoSpectrums=1**. Change **only** the **IQ\_IN2=1**. Then on the desktop right click on the MixW Butterfly shortcut icon and select **“Properties”**. Then choose the **«Shortcut»** tab and there you can change the target by adding a /1 or /2:

Target: "C:\Program Files\MixW\MixW2.exe" /0

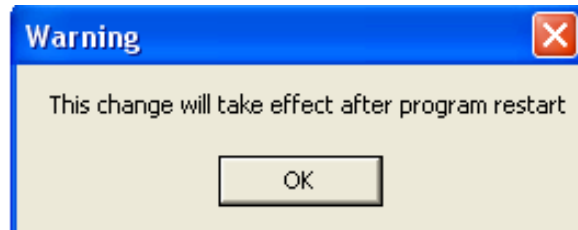
The one (/1) is for one waterfall or spectrum, while the two (/2) is for two. Click **"Application"** and **"OK"**.

**NOTE 3:** You can also choose the one or two waterfall/spectrum from: **Start > All Programs > MixW > MixW dual channel version** for two spectrums, or **Start > All Programs > MixW > MixW**, for one.

We can change the dock (place) of Waterfall /Spectrum, that is to say which Waterfall or Spectrum will be above or below. Right click in the Waterfall or Spectrum and we check with (v) what we want

it is above or with the keys **Alt + w**. Note that what is above shows the frequency of transceiver plus (+) the audio frequency, while that is under shows only the acoustic frequency like 1, 2, 3 where it means 1=1000 Hz, 2=2000 Hz, 3=3000 Hz.

Also we can place these horizontal by right clicking on the waterfall or spectrum and selecting **Horizontal spectrum**. On the next pane click **OK**.



Restart MixW and now you have waterfall and spectrum in horizontal mode like this:

