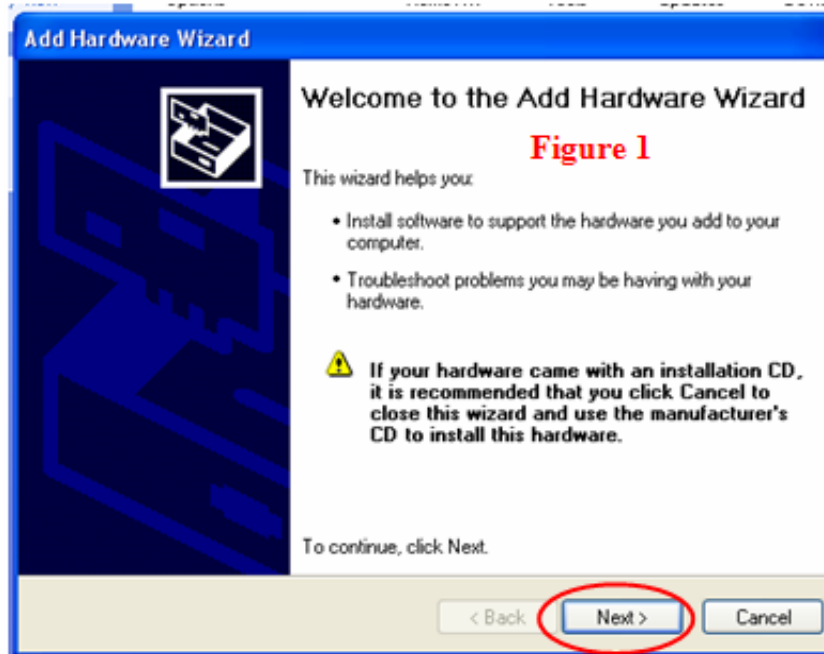


## Mixw / UI-view

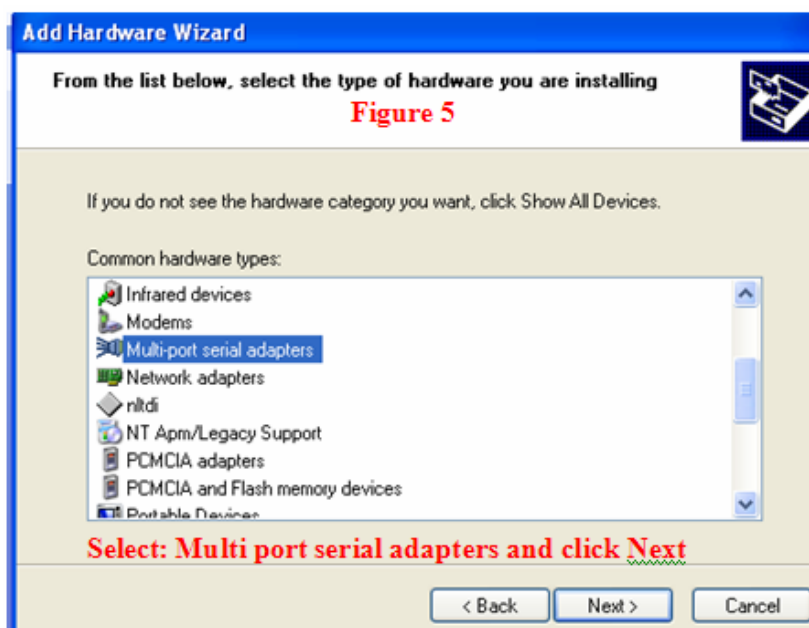
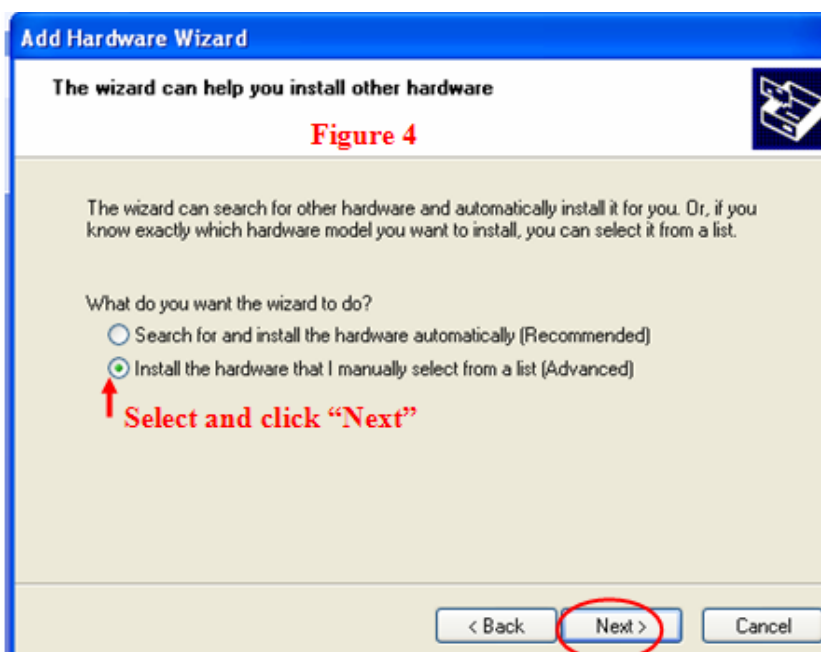
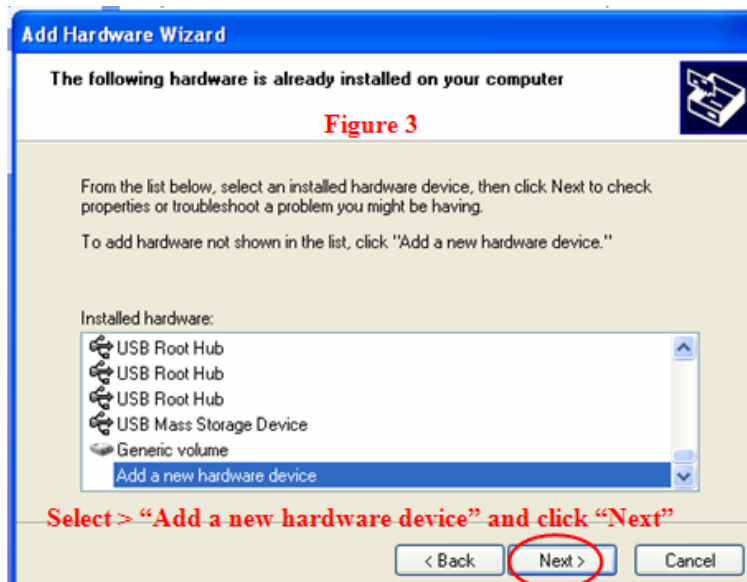
From <http://www.mixw.net/index.php?j=related> download the [ComEmulDrv3.zip](#) and unzip it to a file that you can find it easy.

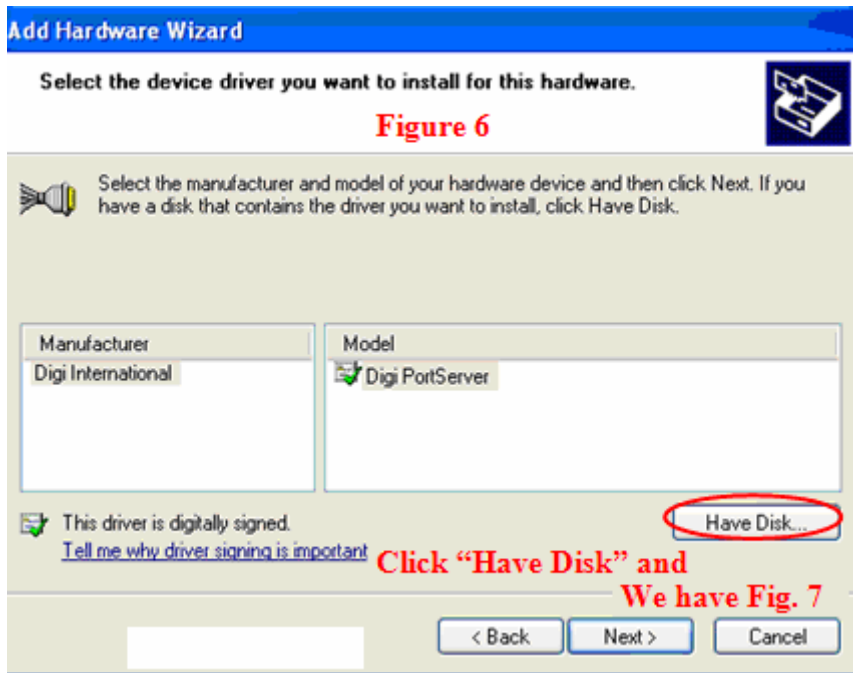
Click > Start> Control panel> if your Windows XP is not in “Classical form” then (at left) click at “change in Classical View” and open File “Add hardware”, appear the pane Figure 1:



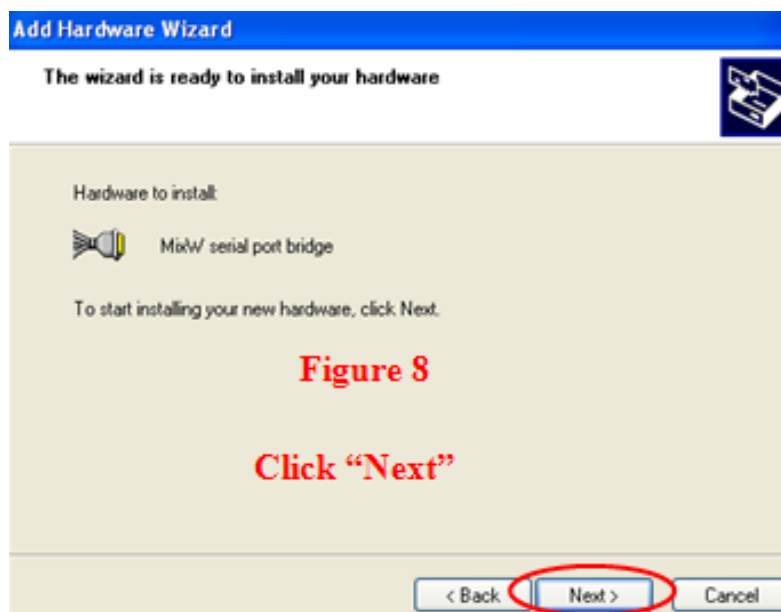
Click Next and we have figure 2

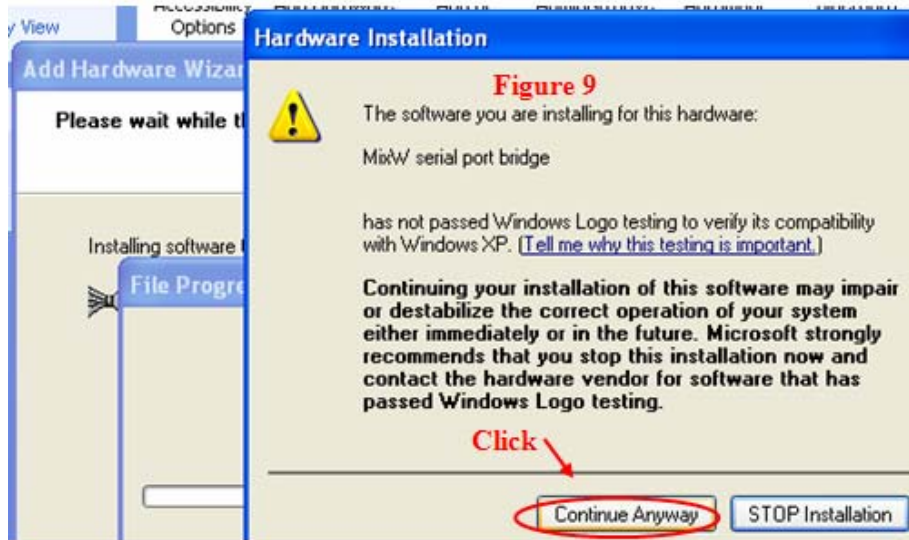






When find the program click **"Open"** and appear Figure 8 and click **"Next"**

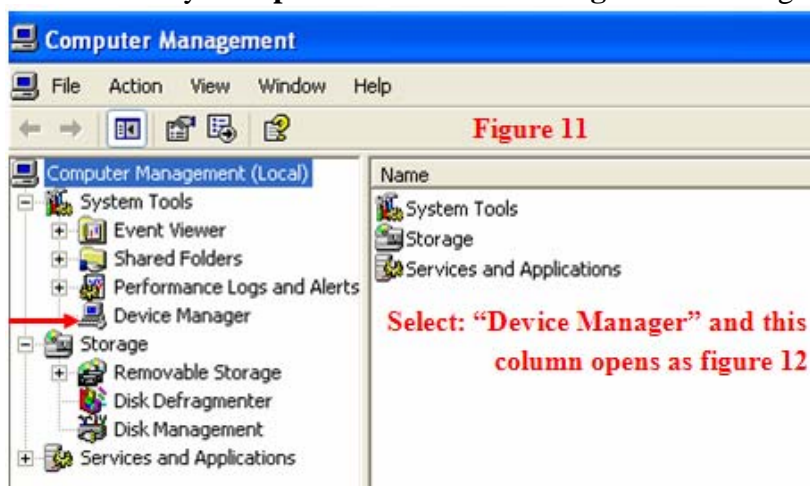


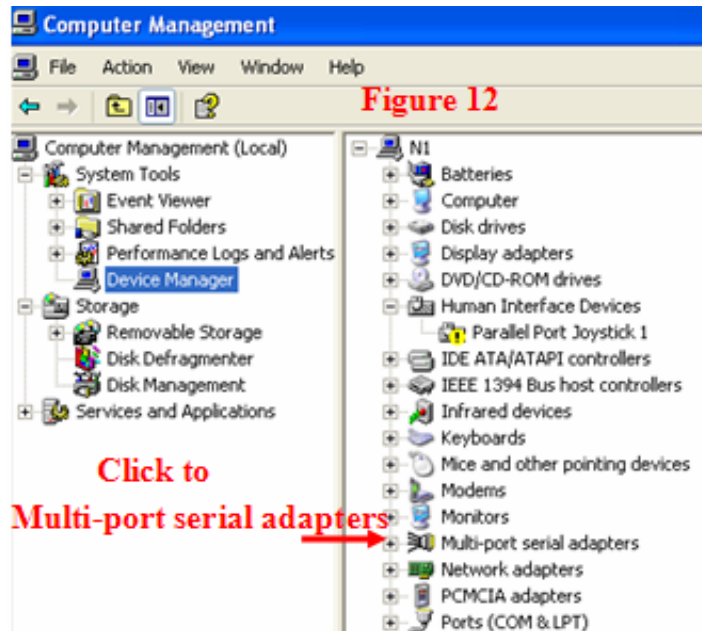


And close all

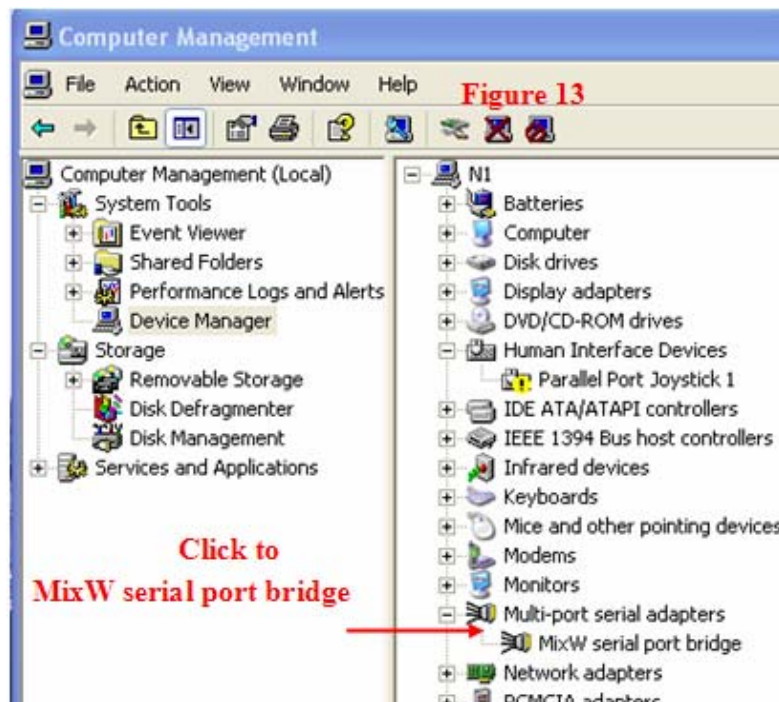
## Configuring Ports

Right click on “My Computer” and click “Manage” we have figure 11





Multi-port serial adapters open:



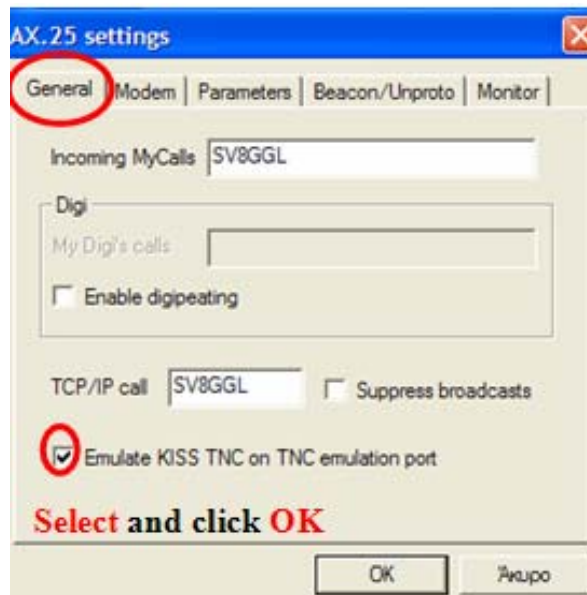
And we have Figure 14



And **REBOOT** the PC

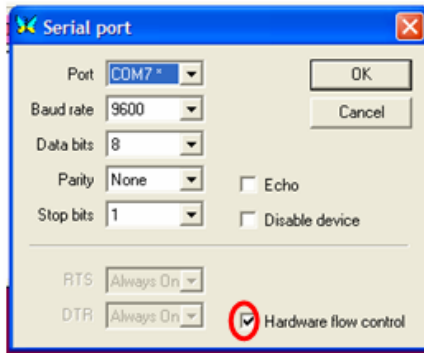
### Setup MixW and UI-View

Open MixW in Packet mode. Select mode > Mode Settings.



Note: The settings that we have "Configure > TRCVR CAT/PTT we leave these as they are working very well

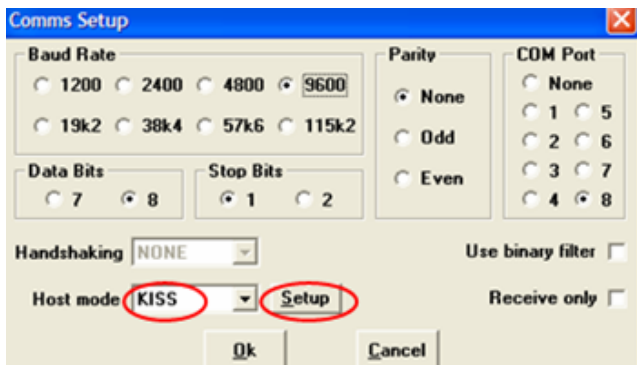
Select **Configure > TNC emulation**



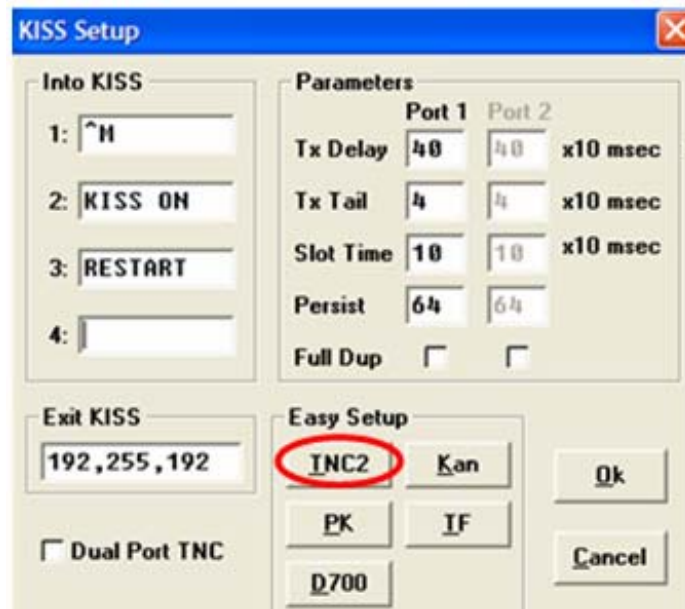
Port = same number that we choose  
Figure 14 for MixW.  
Baud rate = UI View accepts up to 115K  
Data bits = 8  
Parity = None  
Stop bits = 1  
Hardware flow control = always

Close MixW and open UI-View

**UI-View > Setup > Comms Setup**



Baud Rate, Parity, Data Bits, Stop bits,  
= select the same as MixW pane.  
COM Port = select port as we choose in  
Figure 14 for UI-View  
Host mode = select **Kiss**  
Click button **Setup**



For Easy Setup click button TNC2.  
Click OK, OK

### OPERATE APRS on 2 meters

- 1) Transceiver **FM** on 144800 (region 1), open MixW in **Packet** mode, we appear **Mode Setting**, click **Modem** tab and we select **VHF 1200 baud (standard, 1200/2000 Hz)**.
- 2) MixW down at **Start bar**, and
- 3) open UI-View and as soon as possible we transmit information those we have at UI-View> Setup> Station Setup.

### OPERATE APRS on HF

- 1) Transceiver SSB.
- 2) Open MixW in **Packet** mode, we appear **Mode Setting**; click **Modem** tab and we select **HF 300 baud (200 HZ shift)**, then same as VHF.

Note:

From [www.mixw.co.uk/aprs/aprs.htm](http://www.mixw.co.uk/aprs/aprs.htm) we can find APRS maps for all over the world.

center HF APRS frequency						
80m	40m	30m	20m	17m	15m	10m
3615	7035	10149.25	14101.25	18102	21117	29250
10m - FM mode 1200 baud shift 1200/2200						
HF - USB/LSB 300 baud shift 200Hz						